

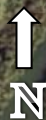


# 2012-13 Aerial Photos

## Aerial 1 : Grazing Land Opposite Ford Close



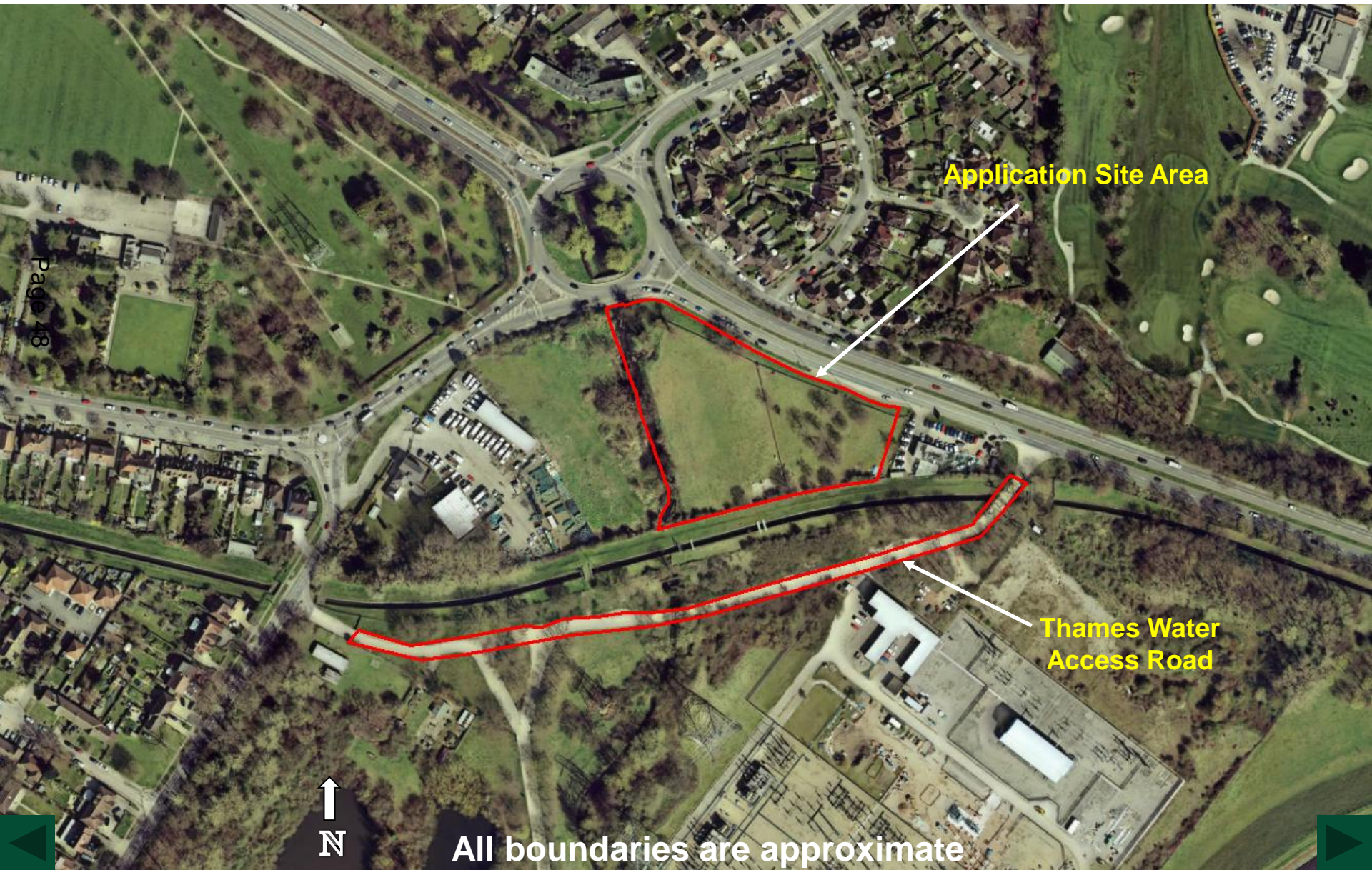
Page 47



All boundaries are approximate

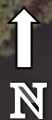
# 2012-13 Aerial Photos

## Aerial 2 : Grazing Land Opposite Ford Close



Application Site Area

Thames Water Access Road



All boundaries are approximate

Figure 1 : View of the application site to the south west with the A308 to the north west



Figure 2 : View of the application site facing south west  
west



Figure 3 : View of the application site facing south west  
west



Figure 4 : View of the application site facing south



Figure 5 : View of the application site facing south



Figure 6 : View of group of trees to remain facing south east







Figure 7 : View of Mr Sparkle car wash facing east



Figure 8 : View of houses on Ford Close facing north



Figure 9 : View of application site and A308 facing east



Figure 10 : View of River Ash and wildlife corridor facing south



Figure 11 : View of Thames Water access road facing east



This page is intentionally left blank